



miniVNA PRO

Bluetooth with GNU/Linux

Serge Stroobandt, ON4AA

Copyright 2017–2019, licensed under [Creative Commons BY-NC-SA](#)

Before proceeding, please, **complete the steps for USB connectivity** using GNU/Linux. **Below instructions depend on those steps being completed first.**

Below information is applicable to Ubuntu LTS based systems.

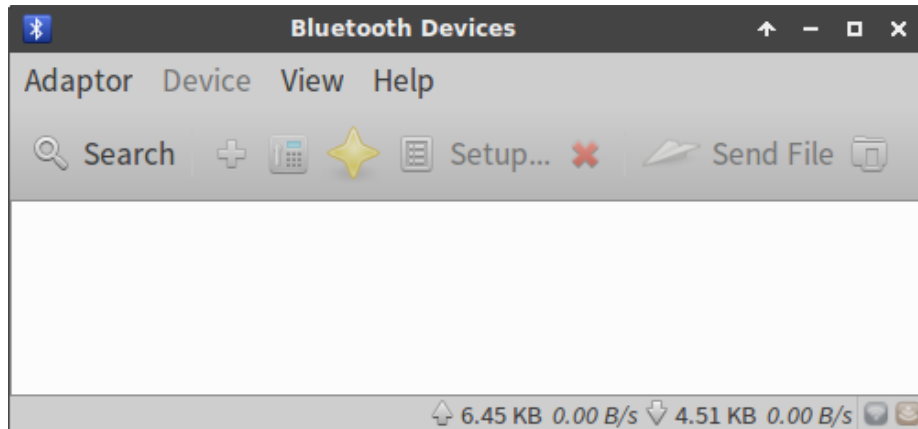
Blueman manager

First, ensure that the blueman package is properly installed:

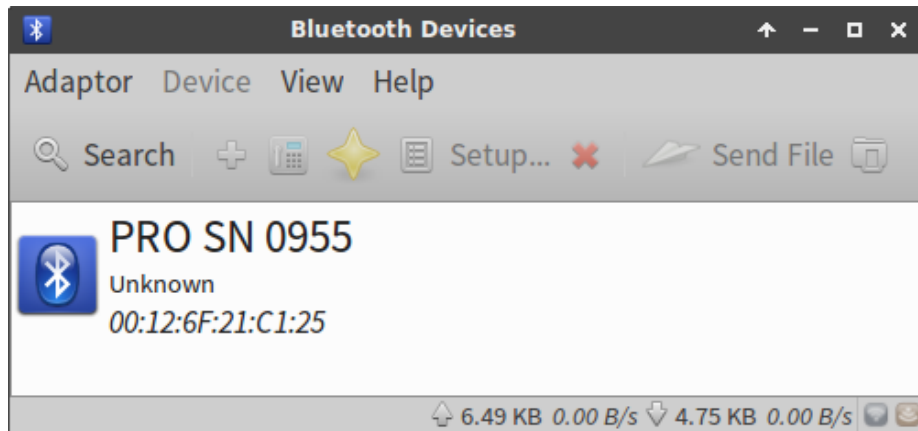
```
$ sudo apt install blueman
```

If this is the first time using blueman, remove the Bluetooth dongle and reinsert it, or alternatively reboot your system.

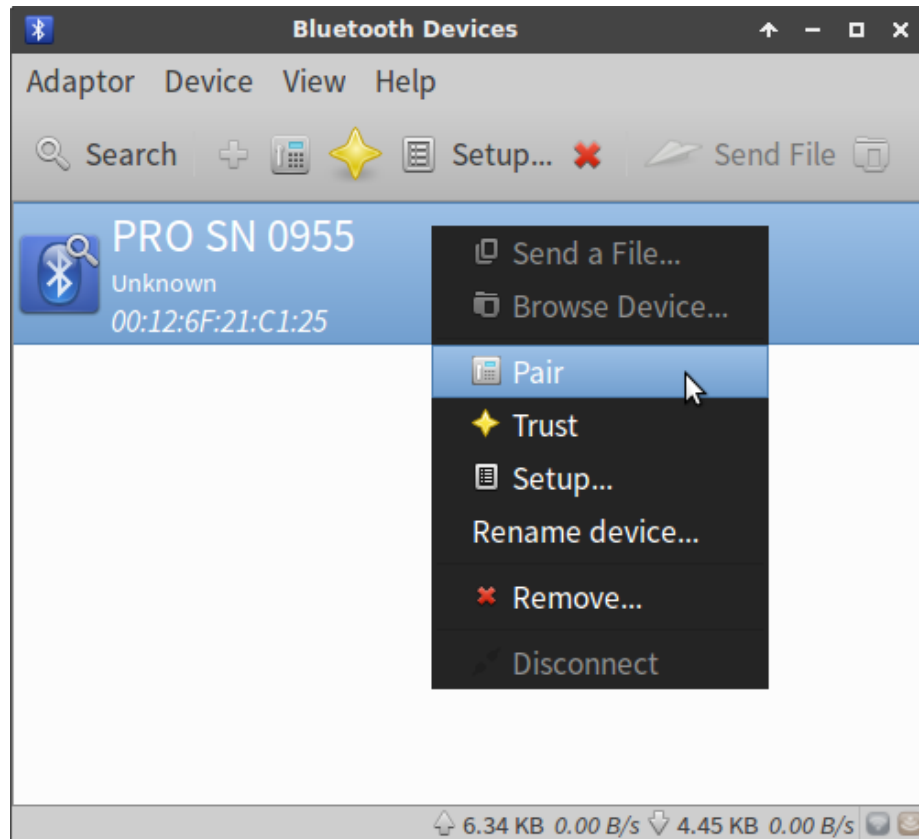
1. Start the Bluetooth manager either from the menu or by right clicking the task bar icon and selecting Devices . Hit the button to discover Bluetooth devices in the neighbourhood.



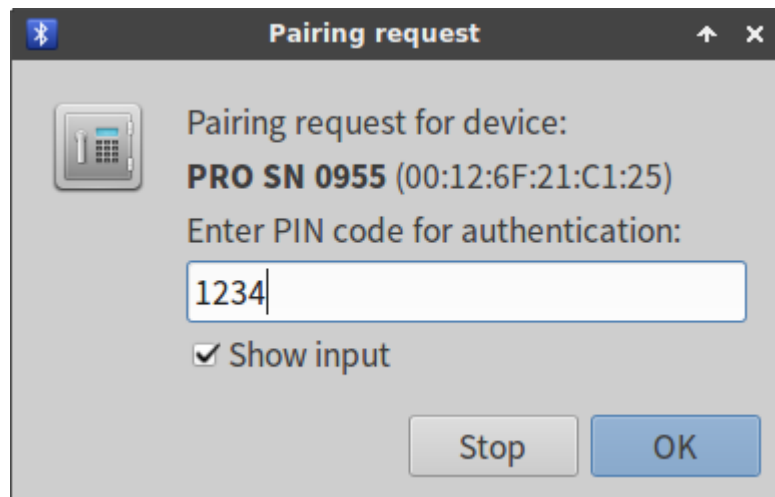
2. The miniVNA PRO was discovered, but is still not connected.



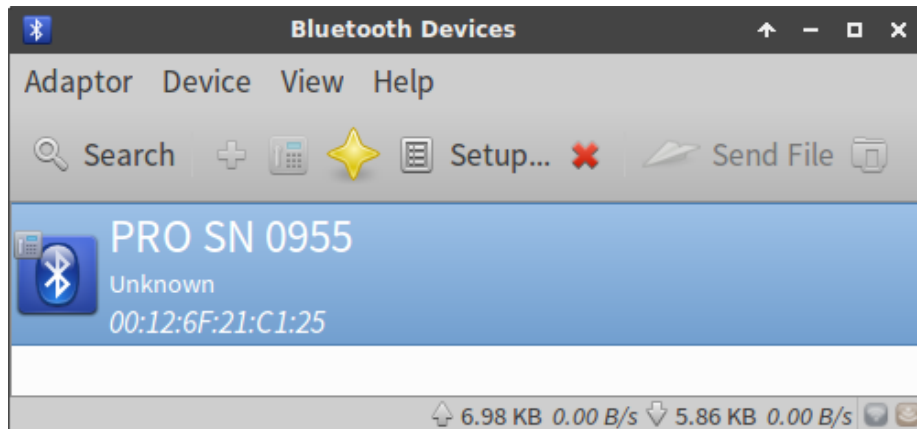
- Click with the right mouse button on the discovered device, and select Pair.



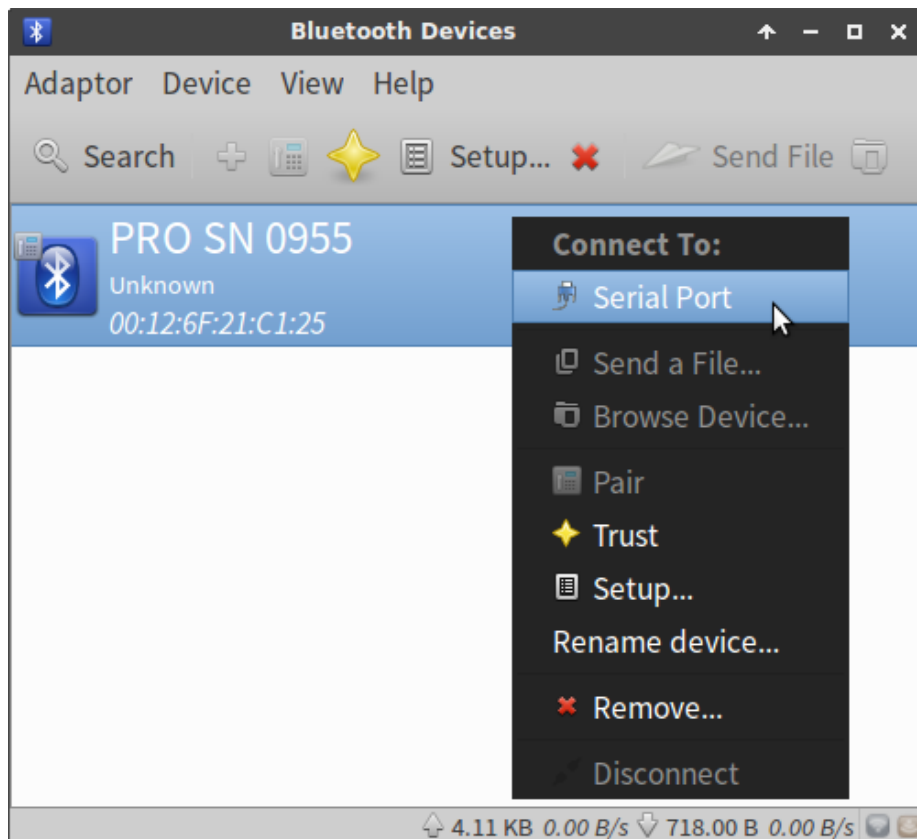
- Now, pair the miniVNA PRO using the PIN sequence 1234.



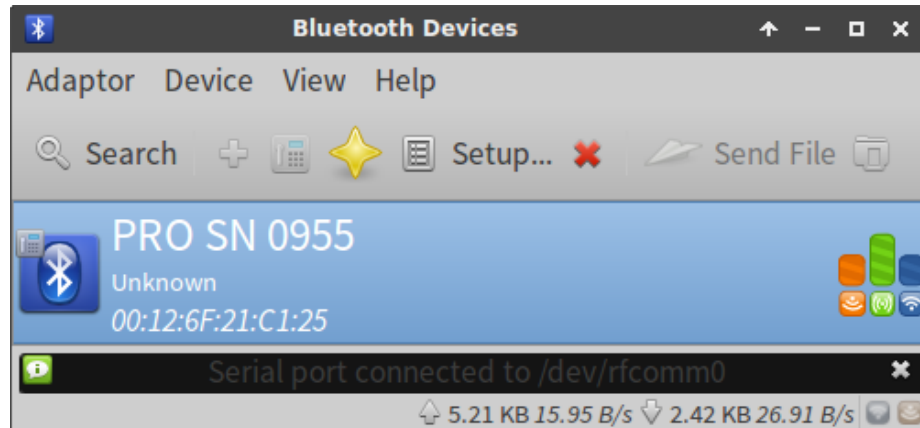
5. The miniVNA PRO is now paired as evidenced by the small telephone icon on top of the Bluetooth icon. Trusting the device is not necessary and does not influence the bug described in the next section.



6. Once more, right click on the device and select Connect To: Serial Port.



7. The miniVNA PRO is now connected to a serial port, which `/dev/rfcomm` port number is indicated at the bottom of the Bluetooth Manager window. Signal strengths are also shown with bar graphs.



Caveat

When the Bluetooth connection gets interrupted, **a new `/dev/rfcomm` port number will be assigned upon reconnecting.** Using Blueman Manager, at least you will be notified about this new `/dev/rfcomm` port number. That way at least you will know what is happening.

This stands in contrast to the automatic connection method described by K. Gopa Kumar, VU2XTO, and used for his [stand-alone VNA using a Raspberry Pi](#). However, that method does not always leave clear which port number is in use after a reconnection.

Bluetooth class & version

The miniVNA PRO [specifications](#) indicate Class 1 Bluetooth, implicating transmitted power is 20 dBm or 100 mW. Provided a clear line of sight, good antennas and Class 1 devices at both ends, the range could extend up to 100 m.

Whereas [class indicates power](#), the Bluetooth *version* indicates its modulation scheme and thereby its data rate throughput. The Bluetooth version is not stated in the specifications. However, this can easily be determined by employing the GNU/Linux `hcitool` command.

First, determine the MAC address of the connected device:

```
$ hcitool con
Connections:
  < ACL 00:12:6F:21:C1:25 handle 71 state 1 lm MASTER
```

Requesting information about the connected device, reveals the miniVNA PRO runs a **link manager protocol (LMP)** of version 2.0 which corresponds to Bluetooth version 1.2 (see Table 1).

```
$ hcitool info 00:12:6F:21:C1:25
Requesting information ...
  BD Address: 00:12:6F:21:C1:25
  OUI Company: Rayson Technology Co., Ltd. (00-12-6F)
  Device Name: PRO SN 0955
  LMP Version: 2.0 (0x3) LMP Subversion: 0x10b7
  Manufacturer: Cambridge Silicon Radio (10)
  Features: 0xff 0xff 0x8f 0xfe 0x9b 0xf9 0x00 0x80
    <3-slot packets> <5-slot packets> <encryption> <slot offset>
    <timing accuracy> <role switch> <hold mode> <sniff mode>
    <park state> <RSSI> <channel quality> <SCO link> <HV2 packets>
    <HV3 packets> <u-law log> <A-law log> <CVSD> <paging scheme>
    <power control> <transparent SCO> <broadcast encrypt>
    <EDR ACL 2 Mbps> <EDR ACL 3 Mbps> <enhanced iscan>
    <interlaced iscan> <interlaced pscan> <inquiry with RSSI>
    <extended SCO> <EV4 packets> <EV5 packets> <AFH cap. slave>
    <AFH class. slave> <3-slot EDR ACL> <5-slot EDR ACL>
    <AFH cap. master> <AFH class. master> <EDR eSCO 2 Mbps>
    <EDR eSCO 3 Mbps> <3-slot EDR eSCO> <extended features>
```

Table 1: Line management protocol and corresponding Bluetooth version

LMP version	Bluetooth version
0	1.0b (withdrawn)
1	1.1 (withdrawn)
2	1.2 (withdrawn)
3	2.0 + EDR
4	2.1 + EDR
5	3.0 + HS
6	4.0
7	4.1
8	4.2
9	5.0
10	5.1

Blueman bug

Now comes the less elegant, tricky part... Normally, whilst running `vna/J`, one would select now the newly created `rfcomm` port by entering the Analyzer → Setup ... menu. However, if one runs `vna/J` as a normal, unprivileged user, any attempt to connect to the newly created `/dev/rfcomm` port by hitting the `Test` is welcomed with a red Failed to open port! notification. This is sometimes followed by a rather obscure `purejavacomm.PortInUseException`.

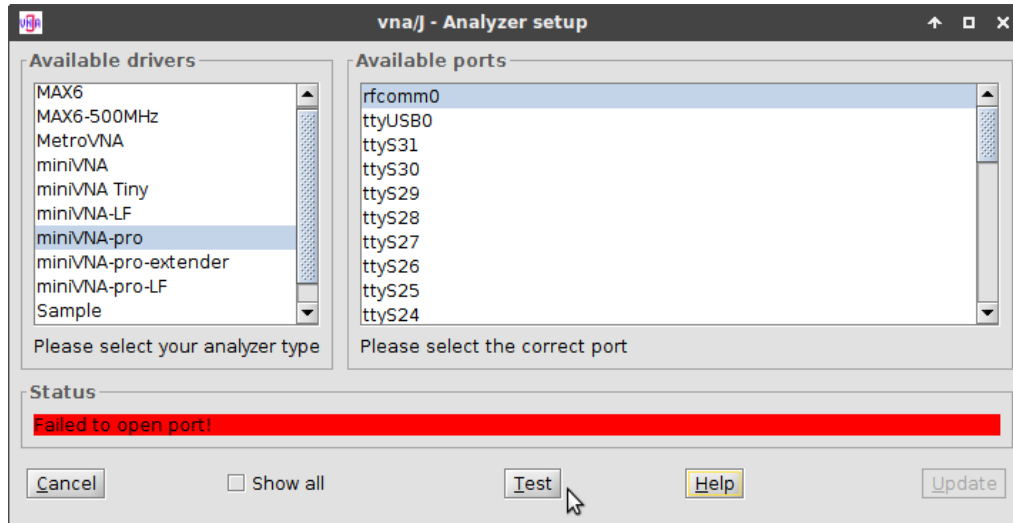


Figure 1: Red Failed to open port! notification

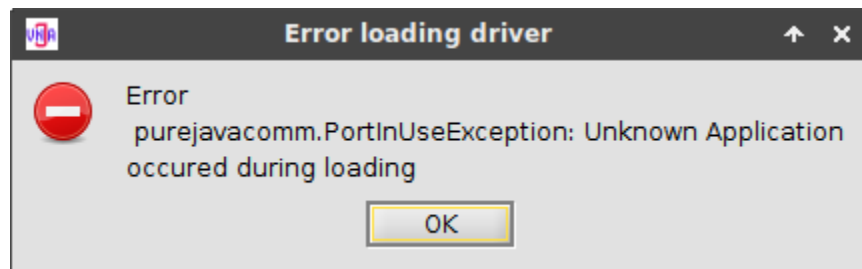


Figure 2: purejavacomm.PortInUseException error

The issue at hand is caused by a [confirmed Blueman bug](#) that is [currently being worked on](#).

Launching vna/J with pkexec

On GNU/Linux, only the `.jar` Java™ archive file is required. Personally, I find it convenient to keep this file in the directory `/home/opt/ham/vna-j/`.

Below bash script helps with always launching the latest version of vna/J, even when more than once version is available in the /home/opt/ham/vna-j/ directory. The script is stored in my /home/bin/ham/ custom scripts folder under the filename vna-j. It should be made executable with `chmod +x vna-j`. Adding the /home/bin/ham/ path to the \$PATH environment variable might come handy for debugging Java™ errors.

```
# !/usr/bin/env bash

INSTALLDIR='/home/opt/ham/vna-j'

# Run the latest version of vna/J.
java -jar $(ls -lv $INSTALLDIR/vnaJ*.jar |tail -n 1) &
```

Because of the previously mentioned very annoying Blueman permission issue, the script vna-j needs to be launched using `pkexec`.

To successfully run the program using the [Polkit](#) infrastructure ([Archlinux info](#)), a `krause.vna.gui.policy` file needs to be created in the `/usr/share/polkit-1/actions/` directory. This policy file refers to my `/home/bin/ham/vna-j` launcher script.

```
sudo nano /usr/share/polkit-1/actions/krause.vna.gui.policy
```

```
<?xml version="1.0" encoding="UTF-8"?>
<!DOCTYPE policyconfig PUBLIC
"-//freedesktop//DTD PolicyKit Policy Configuration 1.0//EN"
"http://www.freedesktop.org/standards/PolicyKit/1/policyconfig.dtd">
<policyconfig>
  <action id="org.freedesktop.policykit.pkexec.vna-j">
    <vendor>Dietmar Krause, DL2SBA</vendor>
    <vendor_url>https://vnaj.dl2sba.com/</vendor_url>
    <description>Run vna/J program</description>
    <message>Authentication is required to run vna/J</message>
    <defaults>
      <allow_any>auth_admin</allow_any>
      <allow_inactive>auth_admin</allow_inactive>
      <allow_active>auth_admin</allow_active>
    </defaults>
    <annotate key="org.freedesktop.policykit.exec.path">/home/bin/ham/vna-
j</annotate>
    <annotate key="org.freedesktop.policykit.exec.allow_gui">>true</annotate>
  </action>
</policyconfig>
```

```
$ pkexec vna-j
```

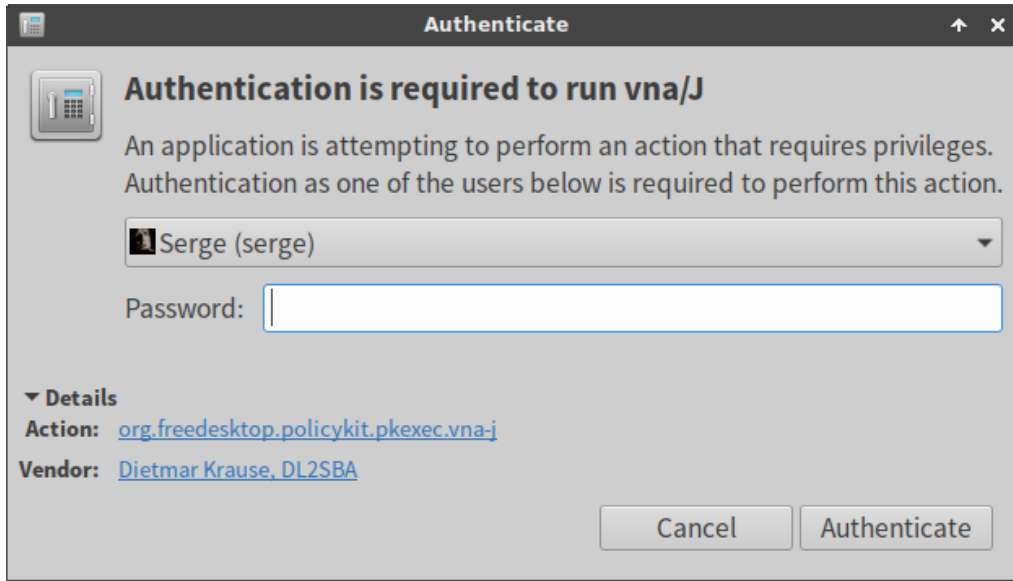



Figure 3: Authentication when launching vna/J using pkexec

The same command may also be launched from a custom desktop launcher button. The method to create desktop launchers differs with each desktop environment. To the left of this paragraph, one can find the official vna/J icon.

Launch vna/J using the above script and enter the Analyzer → Setup ... menu. Click the **Test** button and wait for a brief moment. If the correct rfcomm port number was selected, the Bluetooth connection should work now, indicated by a green coloured notification. Sometimes, two connection attempts are required. On the second **Test** button click, the connection should be established almost immediately. If indeed successful, do not forget to click on **Update**.

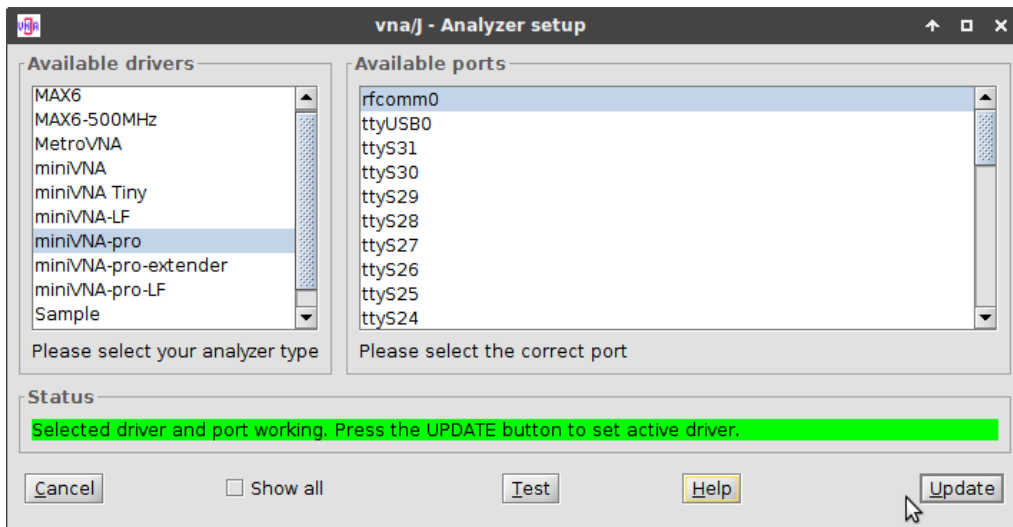


Figure 4: The selected port works now. Do not forget to click the **Update** button.

You should now be able to perform miniVNA PRO measurements wirelessly, using Bluetooth. Personally, I have found the miniVNA PRO Bluetooth connection set up in this way to be very stable, fast and replicable.



This work is licensed under a **Creative Commons Attribution-NonCommercial-ShareAlike 4.0 International License**.

Other licensing available on request.

Unattended **CSS** typesetting with **Prince**.

This work is published at <https://hamwaves.com/minivna.pro.bt/en/>.

Last update: Monday, March 1, 2021.