



(RTTY) Contesting on GNU/Linux with Win-Test

Serge Stroobandt, ON4AA

Copyright 2015–2019, licensed under [Creative Commons BY-NC-SA](#)

Introduction

RTTY is a great mode for contesting. There is no need to type a lot, nor do you need to shout your voice hoarse. What is more, you even do not need to listen to RTTY stations in order to work them. These characteristics render late-night RTTY contesting especially gentle towards family members and nearby neighbours. The required signal-to-noise ratio lies between a moderately low -5 to -9 dB @ 2500 Hz; in any case, much lower than the +10 dB for SSB!

However, getting set for RTTY contesting under GNU/Linux is kind of challenging.



The name may sound elusive, but [Win-Test](#) happens to be the only [full-featured](#) contest logging program [offering some support for running on Linux](#), albeit under [Wine](#) and at the price of a [licensing fee](#). The number of [supported contests](#) is fair, but could be better. Minor [updates](#) are free of charge for an [unlimited period of time](#). Here are the [release notes](#).

It was Ulf Schneid, DK5TX, who made me aware of this by courteously sharing [his story on the net](#), accompanied by Wine instructions. Here, a slightly different set-up will be presented, as I prefer the use of [PlayOnLinux](#) — a front-end for Wine — over using bare metal Wine. PlayOnLinux offers the benefit of installing unrelated Windows™ programs on separate virtual drives, also called «bottles» in [CrossOver](#), a commercial offering similar to the free (as in beer) PlayOnLinux. The use of virtual PlayOnLinux drives keeps things uncluttered and limits the damage when any Windows™ program goes awry.

microHAM Digi Keyer

If you own a modern transceiver with a USB port which presents audio as a sound device, you may skip this part.

Many transceiver interfaces work with GNU/Linux. However, as with all hardware under GNU/Linux, always check for Linux support on the web before acquiring a new interface! Because they are quite popular and I had one lying around, this article will focus on the excellent **microHAM** interface products.



Figure 1: Front panel of the **microHAM** Digi Keyer

The good news is **Matthias (Max) Moeller, DJ5QV**, was so kind to code and share the **mhuxd microHAM Unix daemon**. In doing so, he could count with the help of **Joe Subich, W4TV** of **microHAM** for providing protocol specifications. The daemon should support all **microHAM** interface products.

On Ubuntu-derived systems, it is best to install **mhuxd** by adding its **PPA repository**. This will ensure updates are installed automatically when they become available. Type the following commands (without the \$ prompt) in a terminal window:

```
$ sudo add-apt-repository ppa:dj5qv/mhuxd-0.5
$ sudo apt-get update
$ sudo apt-get install mhuxd
```

The **mhuxd** daemon should immediately start running in the background. You can check that and perform the initial configuration by opening the following URL in your browser: **http://localhost:5052** Bookmark this URL as you may need it again occasionally. Note that **microHAM** interfaces are powered by the transceiver; not the computer.

The screenshot shows the 'mhuxd Device Router' web interface. At the top right, it displays 'Hostname: e8500 I0.50rc3' and a 'Help' link. The navigation bar includes 'Home', 'Daemon', and 'DIGI KEYER' buttons. The 'Summary' page is active, showing a breadcrumb 'Home » Summary'. Below this is a 'Summary' section with a table of system information:

Version:	mhuxd 0.50rc3
Hostname:	e8500
Process ID:	1937
Log File:	/var/log/mhuxd/mhuxd.log
Loglevel:	INFO

Below the summary is a 'Keyer List' section with a table of keyer details:

Name	Serial	Firmware	Status
DIGI KEYER	DKQB2QDR	5.4	ONLINE

Figure 2: Summary screen of the mhuxd daemon available at <http://localhost:5052>, showing the keyer’s firmware version.

Caveat: Upgrade to the latest firmware!

Once mhuxd is installed, first, **make absolutely sure your microHAM keyer is running the latest firmware!** Failing to do so, guarantees problems with MMTTY PTT keying over the FSK port —as I experienced first-hand.

The firmware for the micro/Digi/CW keyers (MK/CK/DK) goes under the name of mmk. Hidden deep within its change file `mmk_change_log.txt`, the November 22, 2007 entry reads:

«Some changes in keyer protocol and settings format was introduced to be compatible with router v5.1.0. Hence firmware **MUST** be upgraded and power-up settings **MUST** be again stored to EEPROM of keyer.»

Installing new keyer firmware is the one and only instance where you are probably quicker off borrowing a Windows™ computer. In less than 10 minutes, you get the job done. Just install the Windows™ **microHAM USB Device Router** and let this program upgrade your keyer to the latest version of the appropriate firmware. Keep your transceiver and cabling at hand too, because —remember— the keyer gets its power from the transceiver.

microHAM port routing

In this step, the CAT, PTT and FSK channels of the microHAM keyer will be assigned to a Linux device virtual serial port. Also make sure to tick off RTS-PTT for each of these virtual serial ports.

Here is why: MMTTY is only able to employ a single COM port for both PTT T/R and FSK tone keying. Instead of using the dedicated PTT1 port, MMTTY will need to key PTT with a RTS (ready to send) signal on the FSK1 port. (See below.) It is a good idea to also configure RTS-PTT for the other virtual serial ports for use with other programs.

Table 1: Digi Keyer port routing

channel	RTS-PTT	virtual serial port
CAT1	<input checked="" type="checkbox"/>	/dev/mhuxd/cat1
PTT1	<input checked="" type="checkbox"/>	/dev/mhuxd/ptt1
FSK1	<input checked="" type="checkbox"/>	/dev/mhuxd/fsk1

mhuxd Device Router Hostname: e8500 [0.50rc3] [Help](#)

Home Daemon **DIGI KEYER**

Ports Settings Action

Daemon > Ports

Daemon Ports Configuration and Routing

Port List

ID	Type	Port / Device	Status	Remote Access	RTS-PTT	DTR-PTT	Destination Name	Destination Serial	Channel
<input type="checkbox"/> 1	VSP	cat1	ok		<input checked="" type="checkbox"/>	<input type="checkbox"/>	DIGI KEYER	DKQB2QDR	CAT1
<input type="checkbox"/> 2	VSP	ptt1	ok		<input checked="" type="checkbox"/>	<input type="checkbox"/>	DIGI KEYER	DKQB2QDR	PTT1
<input type="checkbox"/> 3	VSP	fsk1	ok		<input checked="" type="checkbox"/>	<input type="checkbox"/>	DIGI KEYER	DKQB2QDR	FSK1

Remove

Add Port

Port Type: VSP Virtual Serial Port TCP Network Port

Destination Keyer: DIGI KEYER (DKQB2QDR)

Continue

Figure 3: Configuration and routing of the mhuxd daemon virtual serial ports for the microHAM Digi Keyer

To make the mhuxd device ports accessible from your account, add your username to the mhuxd group. Log out for this change to take effect.

```
$ sudo adduser $USER mhuxd
```

In the rare event of a `mhuxd` daemon crash, there is no need to restart your computer. Typing the following command in a terminal window should do as long as your system is not using `systemd`.

```
$ sudo service mhuxd restart
```

Specifying the CAT protocol

The CAT1 port on the microHAM interface needs to be informed about the serial protocol parameters which are specific to your transceiver brand and model. Consult your transceiver manual for the proper settings. This CAT port will be used by Win-Test —not MMTTY— to read and control your transceiver.

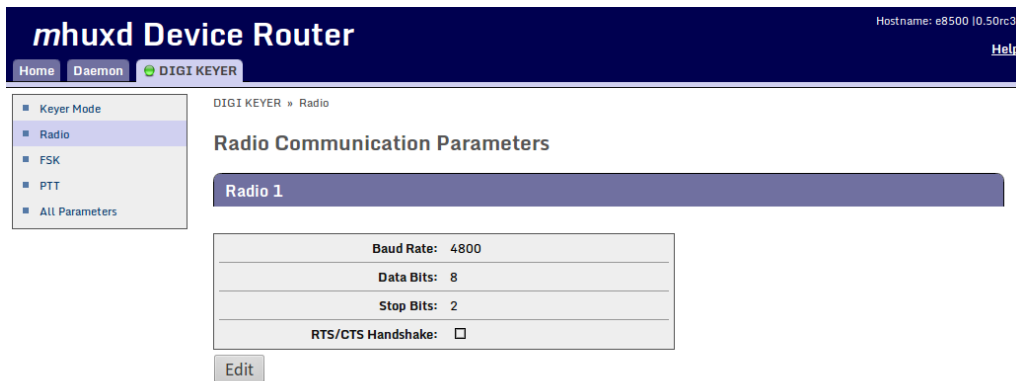


Figure 4: Computer-aided transceiver protocol parameters for interfacing with the Yaesu FT-990. Consult your transceiver manual for the proper settings.

FSK parameters

Standard FSK parameters for amateur radio TTY service are shown below. Other services (press, diplomatic, military) may require different parameters.

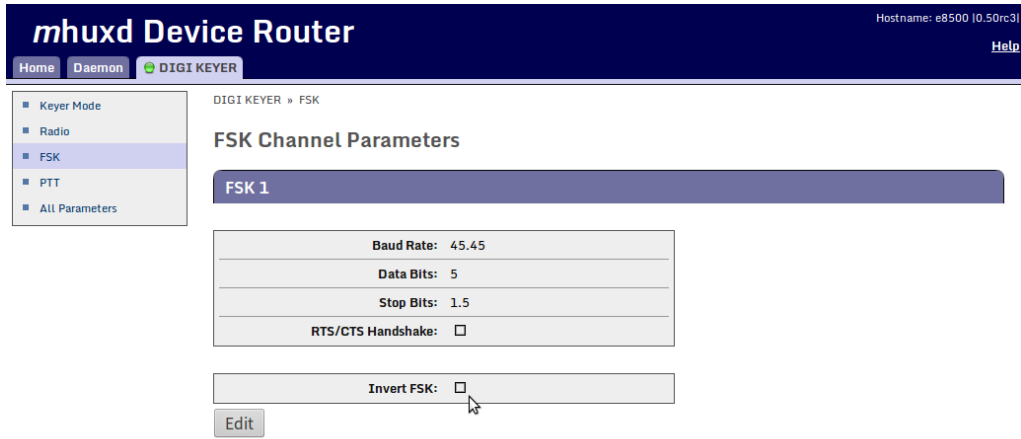


Figure 5: FSK parameter settings for RTTY, with an option to inverse the FSK stream on transmit.

Setting the keyer mode

Keyer mode is the only setting which requires changing each time one switches between operating modes (e.g. when switching from real FSK for MMTTY to DIGITAL AFSK for use with **Fldigi**). On newer microHAM interfaces (DK2, MK2 and MK2R+), it is more practical to opt for the Keyer Mode Follows RIG automation. This will eliminate once and for all the need to revisit this mhuxd configuration page.

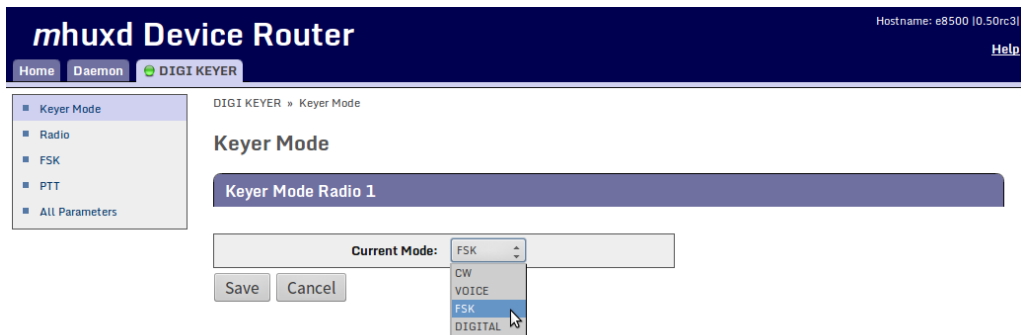


Figure 6: Setting the keyer mode for real FSK keying with MMTTY.

Transceiver settings

- Whenever possible, always use truly keyed FSK on transmit. Because of confusing FT-990 CAT messaging, I am required to always operate my Yaesu FT-990 in RTTY-USB mode.
- To protect the transceiver PA from overheating, reduce the RF PWR to 50%.
- If one of the tones falls outside the (250 Hz) bandpass filter, use the transceiver's SHIFT knob to correct this.
- For fine tuning, employ RX CLAR and TX CLAR simultaneously on the FT-990.
- I prefer to listen to lower pitched "European" RTTY tones instead of the US default. On the FT-990, this is set using DIP switches.

Table 2: Mark and shift settings

style	MARK	shift	SPACE
US default	2125 Hz	170 Hz	2295 Hz
EU easy listening	1275 Hz	170 Hz	1445 Hz

Caveat: Reversed FSK on RX implies inverting FSK on TX!

My Yaesu FT-990 insists on designating RTTY-LSB as reversed or RTTYR in its CAT communication with my computer. This is cumbersome for logging QSOs on LoTW which does not know how to handle RTTYR as a mode. Hence, I operate this transceiver always in its RTTY-USB mode. This means Rev. on reception is always on in MMTTY **and** either my keyer or my transceiver is set to inverse the FSK transmission stream. I chose to do the latter by flipping a DIP switch on the FT-990. Remember: If nobody answers your calls, chances are you are sending in reverse!

PlayOnLinux



As mentioned earlier, PlayOnLinux is a neat front-end for Wine, offering the possibility to install unrelated Windows™ programs on segregated virtual drives. Being included with the Xubuntu LTS repositories, installing PlayOnLinux is straightforward:

```
$ sudo apt-get install playonlinux
```

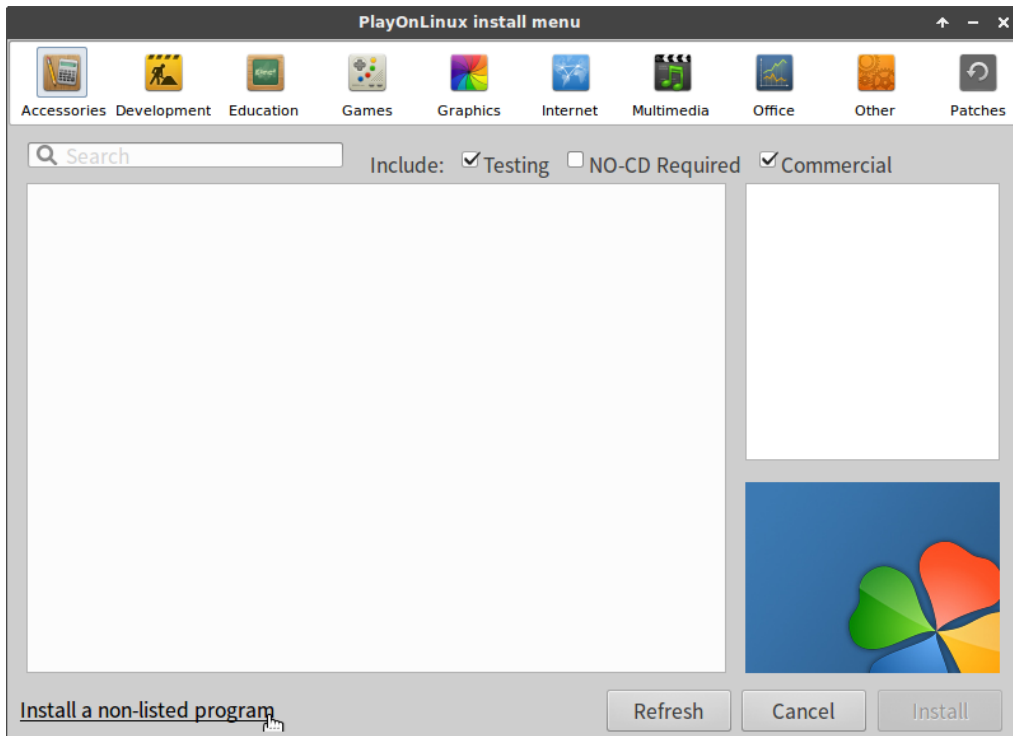


Figure 7: After clicking the `+ Install` button, click on «Install a non-listed program» at the bottom of the window.

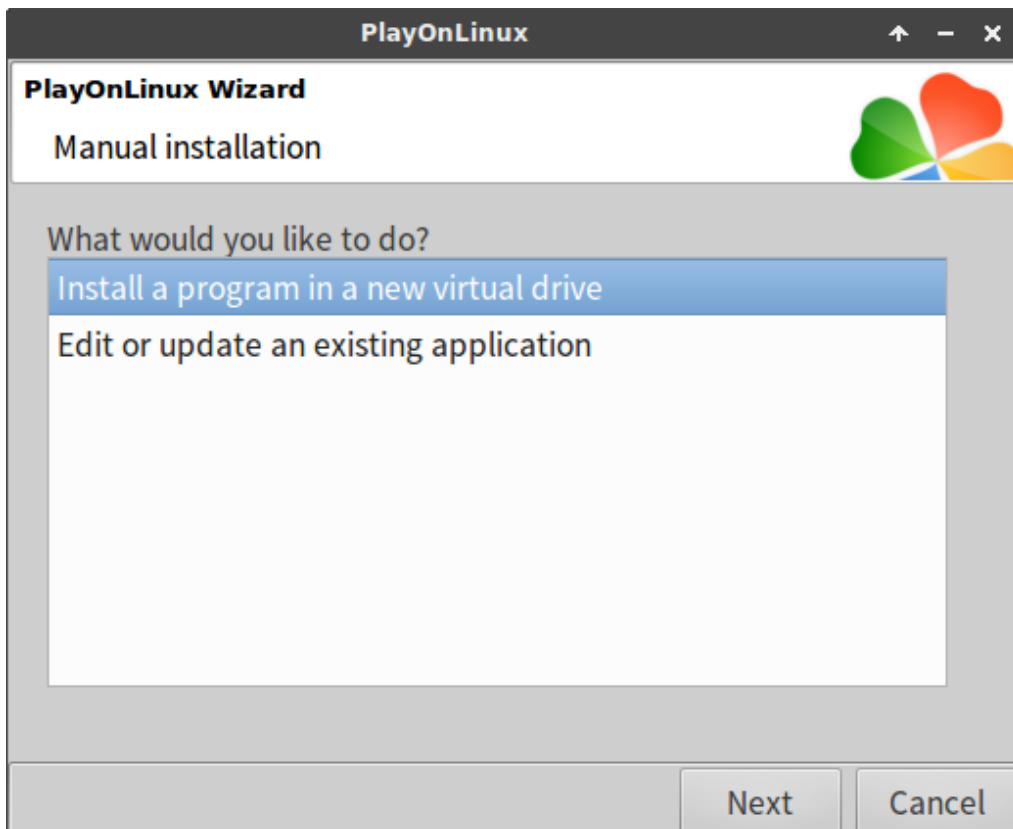


Figure 8: Choose «Install a program in a new virtual drive» and click on `Next`.

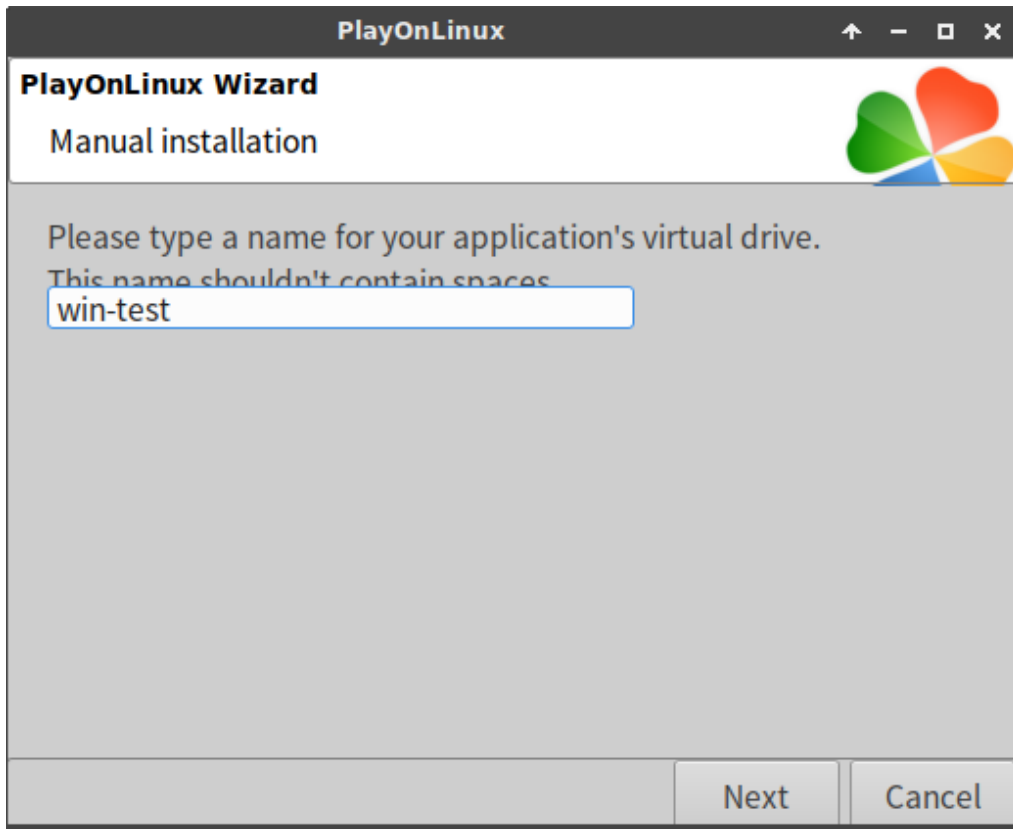


Figure 9: Type win-test and click on **Next**.

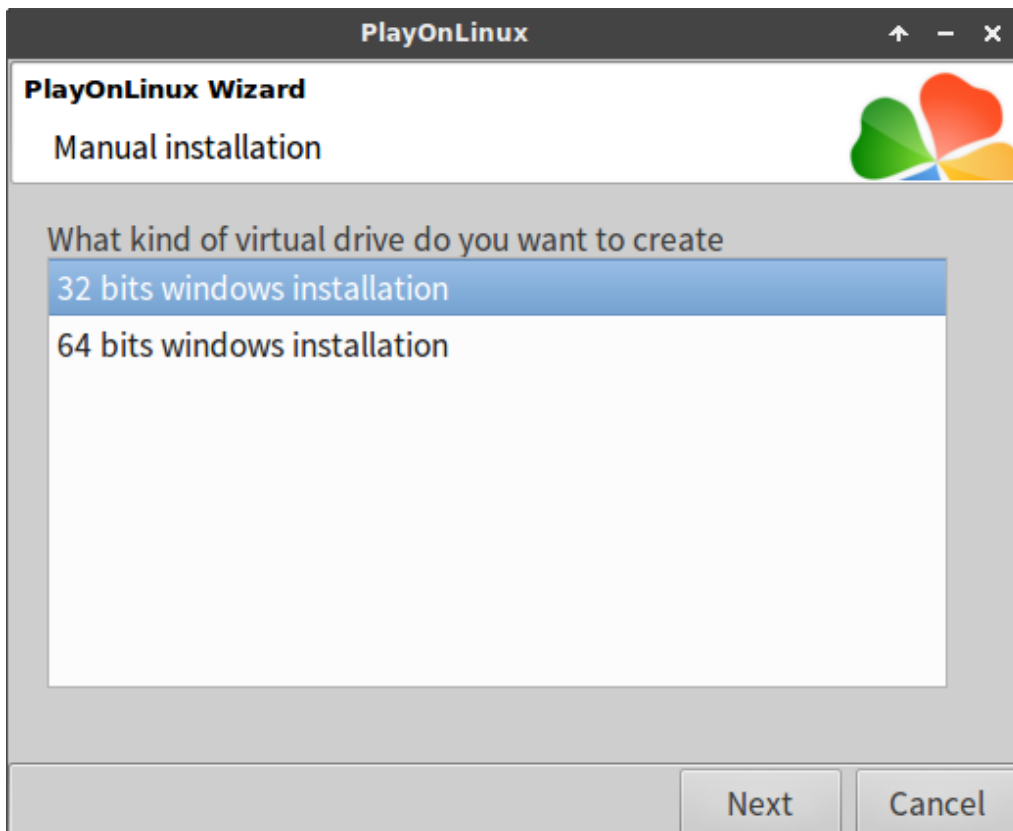


Figure 10: Choose «32 bits windows installation» and click on **Next**.

MMTTY installation



MMTTY is installed first, on a PlayOnLinux virtual drive called `win-test`. MMTTY and Win-Test will share this virtual drive because both programs are related and need to be aware of one another. MMTTY allows for **hard FSK keying**, which in a contest environment is **less prone to errors** than modulating audio AFSK.

Caveat: Do not install EXTFSK!

On the web, you may find conflicting advice about installing the **EXTFSK** MMTTY extension. Here is **the definitive answer** by Joe Subich, W4TV, of microHAM:

«*NEVER* use EXTFSK with microHAM microKEYER, DigiKeyer, microKEYER II, DigiKeyer II, MK2R+ or micro2R. All of those interfaces provide a UART compatible, virtual port for FSK that handles 45, 50, 75 and 100 baud RTTY (baudot) directly. EXTFSK is not compatible with the FSK output of the microHAM “keyer” devices.»

Wine COM port mapping

Both MMTTY and Win-Test carry along their own drivers to communicate with the CAT interface of most common transceivers. These drivers function perfectly with PlayOnLinux, provided the Linux `mhuxd` device ports appear as COM ports to the Windows™ programs on the `win-test` virtual drive.

I reiterate that as a GNU/Linux user, **one needs to make oneself member of the `mhuxd` group** in order to use these virtual ports.

Old wine versions, prior to version 2.8

Up to wine version 2.8, symbolic links from the Linux device ports to the typical Windows™ COM ports can be created directly in the directory `~/.PlayOnLinux/wineprefix/win_test/dosdevices` on the `win_test` virtual drive:

```

$ cd ~/.PlayOnLinux/wineprefix/win_test/dosdevices
$ ln -s /dev/mhuxd/cat1 com1
$ ln -s /dev/mhuxd/ptt1 com2
$ ln -s /dev/mhuxd/fsk1 com3

```

New wine versions, since version 2.8

Since the advent of wine version 2.8, above solution no longer works because wine overwrites any symbolic link. However, the CAT1, PTT1 and FSK1 ports can be mapped to respectively COM1, COM2 and COM3 by adding new string entries to the HKEY_LOCAL_MACHINE\Software\Wine\Ports key of the wine registry on the win-test virtual drive.

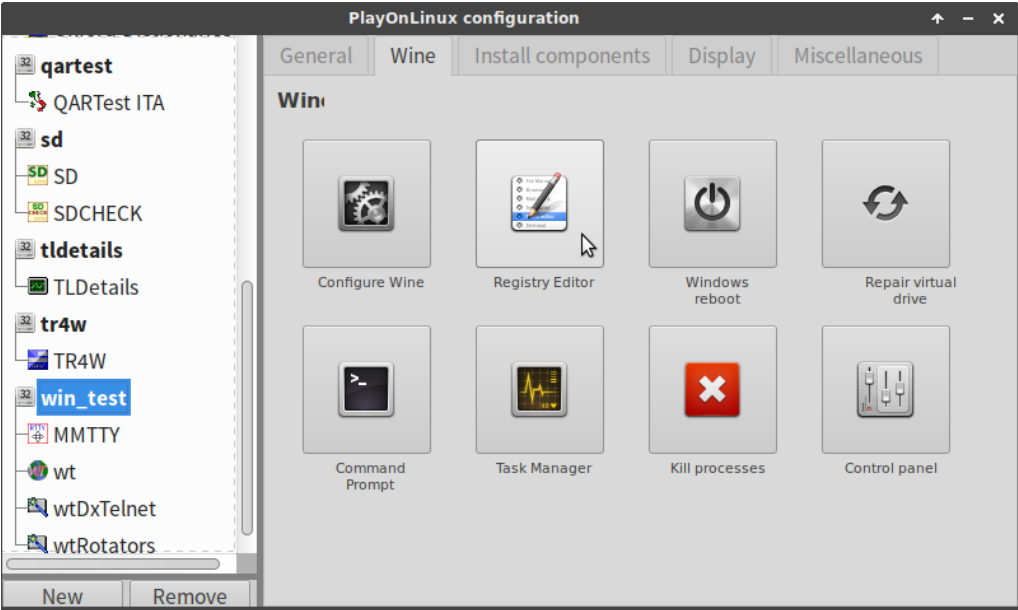


Figure 11: The registry editor can be opened through: PlayOnLinux → Configure → win-test virtual drive → Wine tab → Registry Editor.

Table 3: String values to be added

name	type	data
COM1	REG_SZ	/dev/mhuxd/cat1
COM2	REG_SZ	/dev/mhuxd/ptt1
COM3	REG_SZ	/dev/mhuxd/fsk1

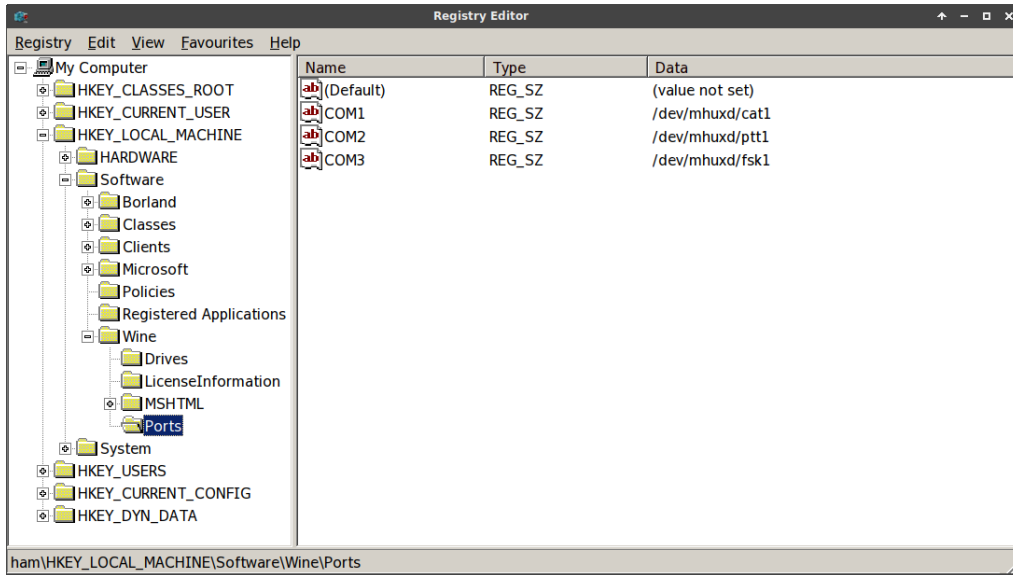


Figure 12: The HKEY_LOCAL_MACHINE\Software\Wine\Ports key with three new string values added to remap COM1, COM2 and COM3 to the mhuxd device ports.

After editing the registry, shut down Wine with `wineserver -k`. Next time Wine runs a program, changes will take effect.

Wine DPI setting

When you are used to GNU/Linux or for people with poor eyesight, the fonts on the Windows™ screens may appear particularly small. Luckily, the dots per inch (DPI) screen resolution can easily be set for each wine virtual drive individually.

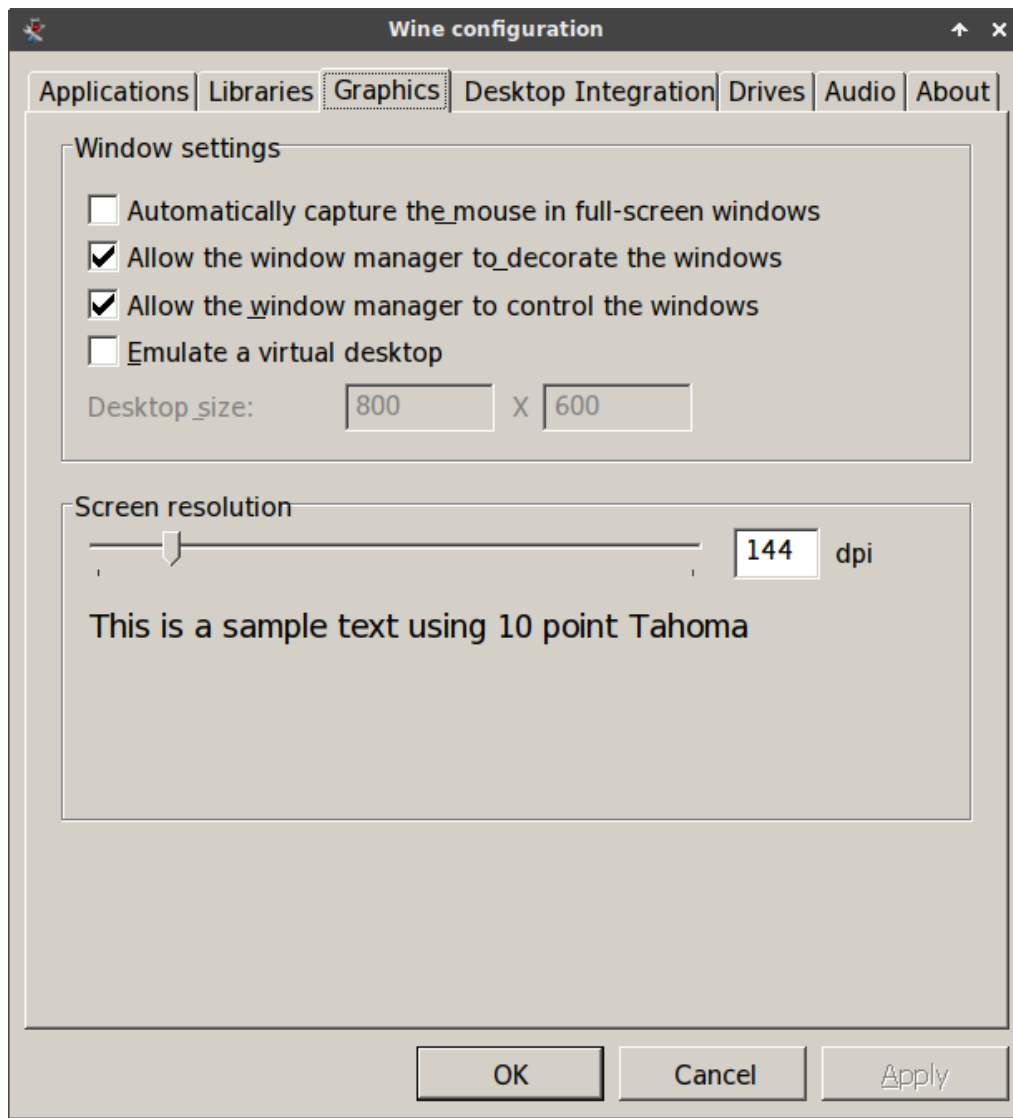


Figure 13: The dots per inch (DPI) screen resolution can easily be increased through: PlayOnLinux → Configure → win-test virtual drive → Wine tab → Configure Wine → Graphics.

Pulseaudio settings

The microHAM Digi Keyer contains its very own low-noise **PCM2902 stereo USB1.1 codec** chip. To use it, open pulseaudio volume control while MMTTY is running and **select the PCM2902 chip as recording source for MMTTY**. Newer microHAM interfaces use a differently named chip, as do modern transceivers with a built-in sound device and USB port.

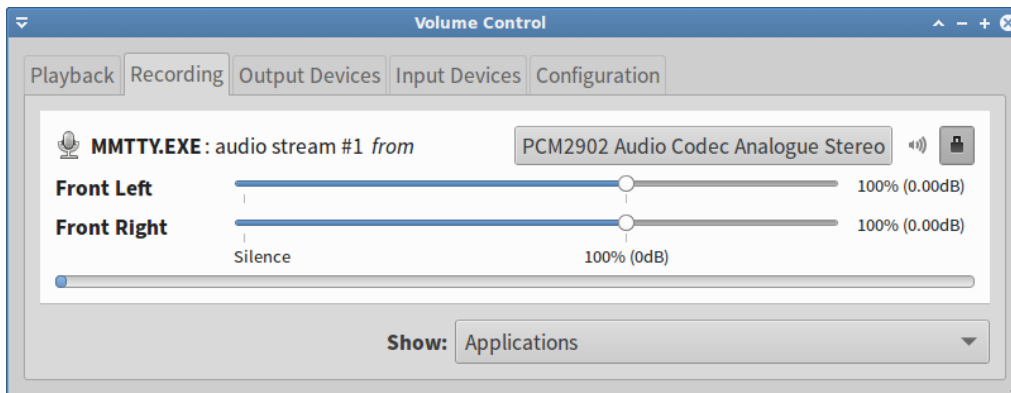


Figure 14: Binding MMTTY recording to the PCM2902 codec using pulseaudio volume control in **Xubuntu LTS**

MMTTY configuration

MMTTY is best configured and tested running standalone, i.e. independently of Win-Test. All MMTTY configuration settings will remain in place under Win-Test, except for the CAT settings and casual QSO message macros which apply only to MMTTY running standalone.

COM port for keying

I am a fervent advocate of **hard FSK keying**, which in a contest environment is **less prone to errors** than modulating audio AFSK. To do so, select COM3 in MMTTY's TX menu for FSK (and PTT) keying.

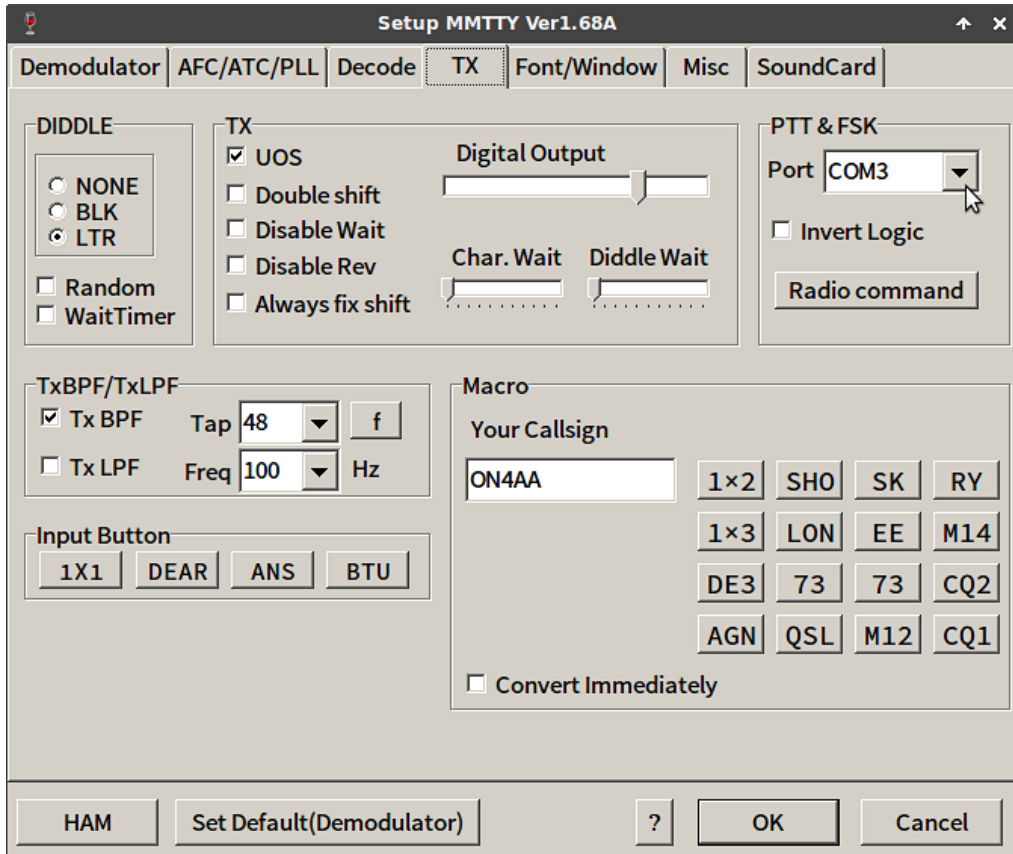


Figure 15: Select COM3 for FSK (and PTT) keying in the MMTTY TX menu

MMTTY is only able to use a single COM port for both FSK and PTT keying. Hence, PTT keying will be performed with a RTS (ready to send) signal on the very same COM3 port. For this to happen, place the appropriate check mark in MMTTY's Radio command menu, underneath the TX menu. This setup will only work when RTS-PTT was previously selected on the [microHAM port routing](#) screen.

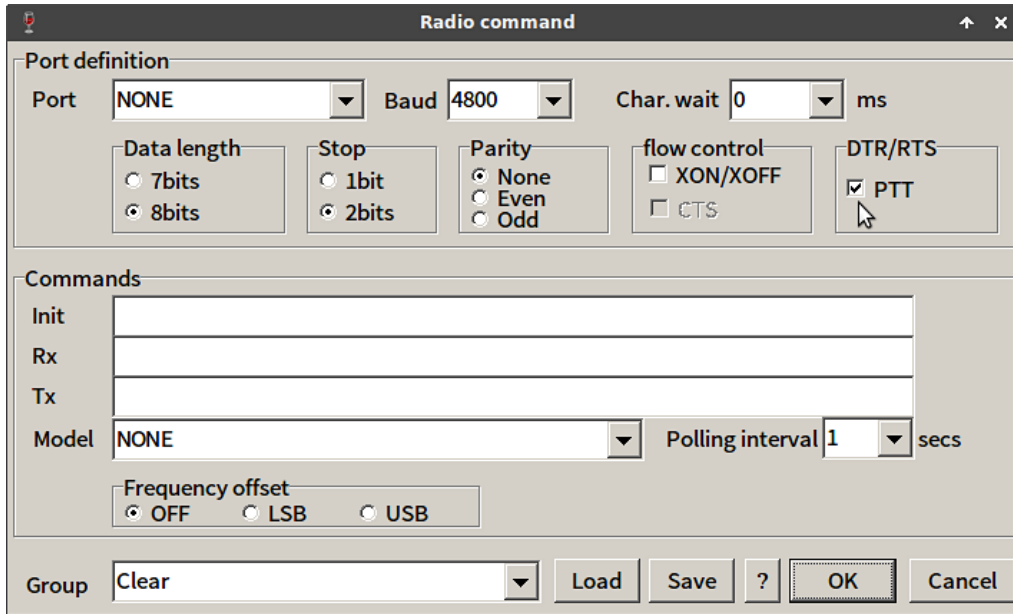


Figure 16: Select RTS for PTT keying in the MMTTY Radio command menu

MMTTY's all important main settings are next up for discussion.

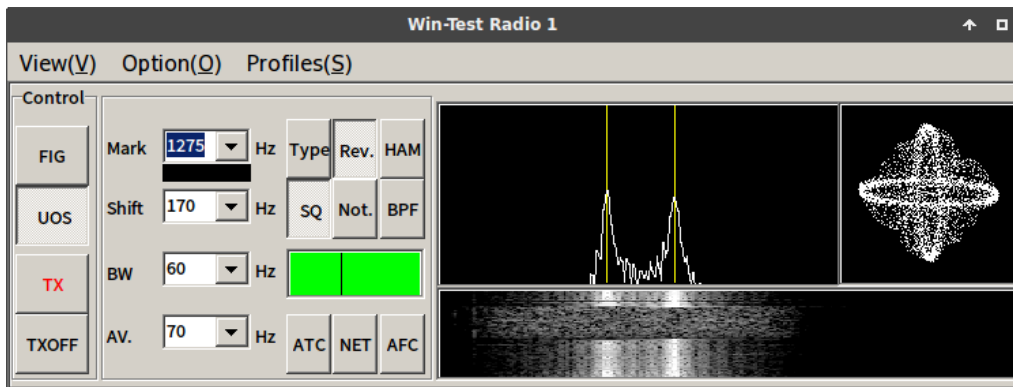


Figure 17: MMTTY on Linux!

Rev.

Because of *confusing FT-990 CAT messaging*, I need to operate my Yaesu FT-990 in RTTY-USB mode. Consequently, MMTTY's *Reverse* Rev. needs to be always on in my case. Test this setting by entering in an RTTY QSO before the contest! Very occasionally, when restarting under Win-Test, MMTTY might be a little confused showing Rev. as on whilst not decoding in reverse. Should this happen, simply click Rev. twice, and all should be again in good order.

I have noticed that, **upon starting MMTTY V1.68A**, one needs to click the **Rev.** button **twice** in order to put MMTTY effectively in reverse decoding!

UOS on

It is recommended to *Unshift On Space* **UOS**, on both transmit and receive, whilst employing space delimiters (instead of using 599-001-001 hyphens). Doing so, increases the noise immunity for letters (which are more common), by always forcing the LTRS code page (i.e. unshifting) after a space.¹ By using unshifting spaces as delimiters between number sequences, the FIGS shift will also be repeated more often.

ATC

Automatic Threshold Control **ATC** adjusts the input level to the comparator in accordance with the strength of the input signal. If propagation conditions are good, it is better left off. It is only useful when there is an echo on the received signal.²



MMTTY's decoding threshold can also be set manually by moving the slider along the green bar. Set this according to your local noise level and propagation conditions.

NET

Activating **NET** makes your transmit frequency follow your receive frequency when using AFSK. This feature should never be used during a contest. It is of no effect when employing truly keyed FSK.

AFC

Automatic Frequency Control **AFC** lets MMTTY track the frequency of the received signal within the receive passband. Leave **AFC** off when operating in S&P mode; In RUN mode, having **AFC** switched on may be useful for working «lid operators». However, remember to reset your MARK tone using the **HAM** button, when switching it back off! Otherwise, you yourself become the «lid operator»!!!

Table 4: AFC

operating mode	AFC
search & pounce	always off
running	allowed on reset MARK tone using HAM after use!

HAM

HAM resets your MARK tone and SHIFT to your preset defaults.

There is an excellent [MMTTY help](#) which you should have read at least once. Additional [MMTTY setup documentation](#) is made available by [Donald A. Hill, AA5AU](#).

Casual QSO messages for MMTTY

Contest messages are always sent by Win-Test; not MMTTY. Independently of these, you can define casual QSO messages for standalone MMTTY use. Here are some examples. Adding line feeds at the beginning and end, makes your messages stand out more at the reception end.

```
—  
%c DE %m %m %m K  
_\  

```

```
—  
%f %n  
UR %r %r  
OP SERGE SERGE  
QTH HASSELT HASSELT  
%c DE ON4AA K  
_\  

```

```
—
%f %n
UR %r %r
OP SERGE SERGE
QTH HASSELT HASSELT
LOC JO 20 QW JO 20 QW
P 50 W 50 W
CENTER LOADED OCFD ANT AT 15 M
MMTTY ON XUBUNTU LTS GNU LINUX
WWW.HAMWAVES.COM
%c DE ON4AA K
_ \
```

```
—
%c DE %m
TNX %n FOR QSO
LOTW BURO EQSL
73 PEACE AND GD HEALTH
%c DE %m SK
_ \
```

```
—
AGN? AGN?
_ \
```

```
—
QSL QSL DE %m K
_ \
```

Caveat: Avoid frequent shifts to FIGS!

When defining RTTY messages, try to avoid frequent changes between letter and figure characters. Missing a LTRS/FIGS shift means that all subsequent characters will be printed wrong up until the next LTRS/FIGS shift. This situation can be improved upon by **setting *Unshift On Space* [UOS], on both transmit and receive, whilst employing space delimiters (instead of using 599-001-001 hyphens)**. Doing so, increases the noise immunity for letters (which are more common), by always forcing the LTRS code page (i.e. unshifting) after a space.¹ By using unshifting spaces as delimiters between number sequences, the FIGS shift will also be repeated more often.

Binary code 00000 is the null character, used for idling.

**Table 5: 5-bit ITA2 USTTY
code pages**

binary	hex	LTRS	FIGS
00011	03	A	-
11001	19	B	?
01110	0E	C	:
01001	09	D	\$
00001	01	E	3
01101	0D	F	!
11010	1A	G	&
10100	14	H	#
00110	06	I	8
01011	0B	J	BELL
01111	0F	K	(
10010	12	L)
11100	1C	M	.
01100	0C	N	,
11000	18	O	9
10110	16	P	0
10111	17	Q	1
01010	0A	R	4
00101	05	S	'
10000	10	T	5
00111	07	U	7
11110	1E	V	;
10011	13	W	2
11101	1D	X	/
10101	15	Y	6
10001	11	Z	"
01000	08	CR	CR
00010	02	LF	LF
00100	04	SP	SP
11111	1F	LTRS	LTRS
11011	1B	FIGS	FIGS

Win-Test installation



The story behind **Win-Test** is absolutely fascinating. Win-Test appears to be developed by a handful of French rocket scientists who, in their 35-hour work week, apparently had too much time on their hands waiting for the next rocket launch. Olivier Le Cam, F5MZN, spearheads this tremendous software project. The proceeds of Win-Test go in their integrity to **FY5KE**, the **M/S contest station of the Radio Amateur Club of Kourou**, better known as RACK and located at the Centre Spatial Guyanais, the space port of the **European Space Agency (ESA)** in **French Guiana**.



Figure 18: Testimony to Win-Test being a serious contest logger: the FY5KE M/S contest team hard at work.

The registration process is quite lengthy. Upon acquiring a license, an e-mail will be sent with credentials to download the **registrable version of Win-Test**.



Figure 19: **FY5KE**, the M/S contest station of the **Radio Amateur Club of Kourou (RACK)** located on the grounds of the **European Space Agency (ESA)** in French Guiana.

Install Win-Test on the same win-test virtual drive where MMTTY was installed previously.

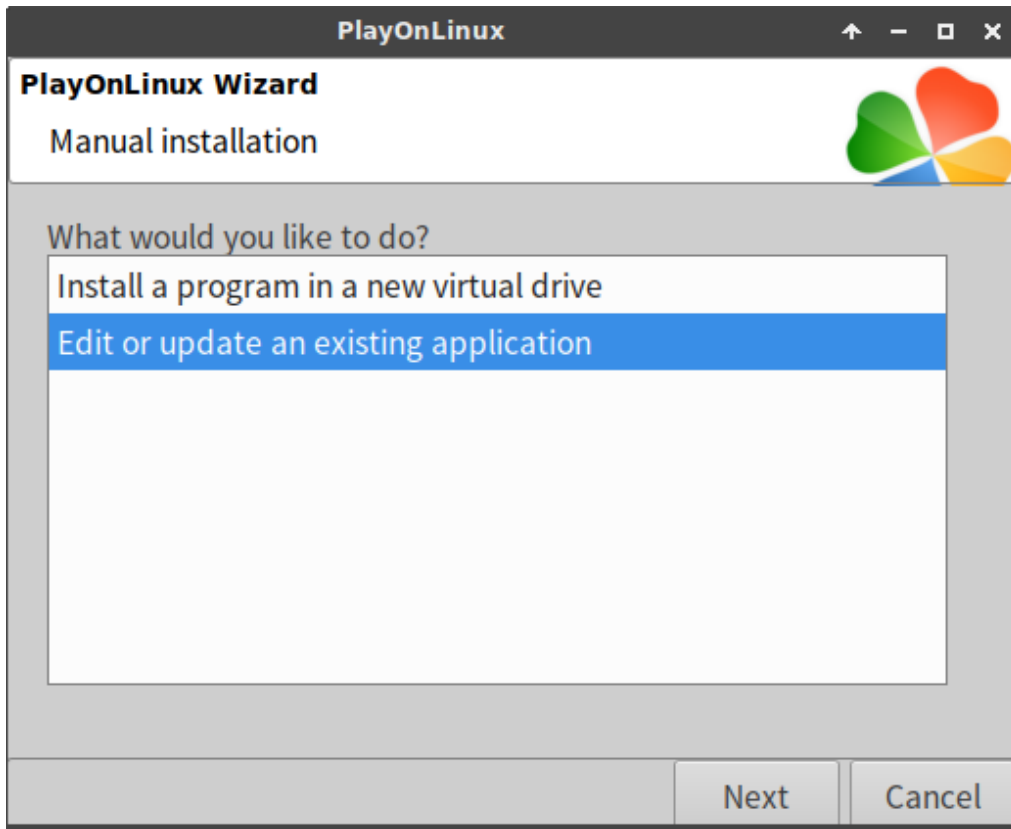


Figure 20: Choose «Edit or update an existing application» and click on .

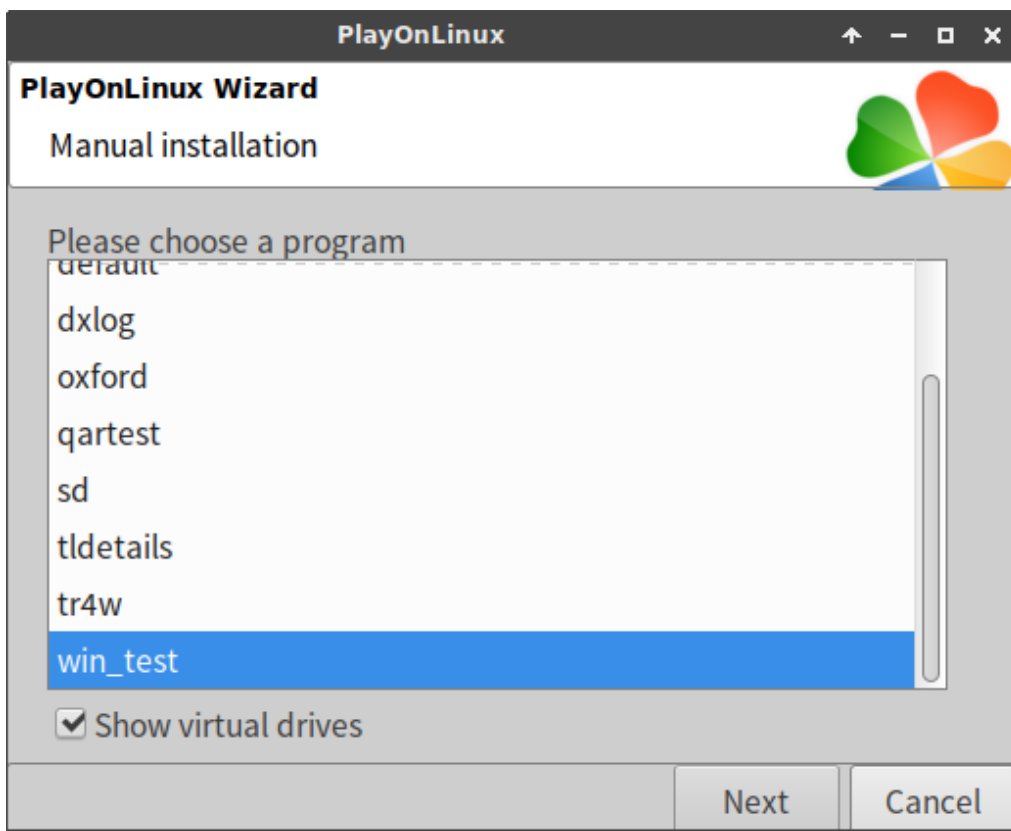


Figure 21: Select «Show virtual drives» and choose the win-test virtual drive. Continue by clicking on .

Without further ado, here is what Win-Test looks like on my [Xubuntu LTS](#) GNU/Linux system:

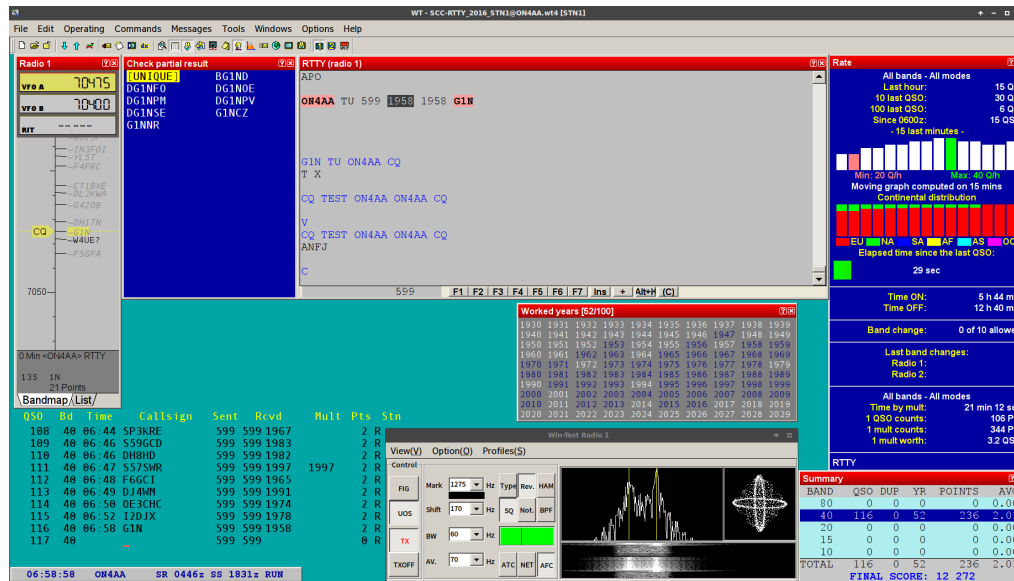


Figure 22: Win-Test with MMTTY on my [Xubuntu LTS](#) GNU/Linux system, both running under [PlayOnLinux](#). While writing this article, I made a somewhat casual effort for the 2016 [SCC RTTY](#) contest.

Well in advance of any contest...

Check [whether the contest is supported](#) by Win-Test and if any [Win-Test updates](#) are available.

RTTY contest messages

Win-Test's default RTTY contest messages can be improved upon. [Donald A. Hill, AA5AU](#), of [RTTY contesting](#) fame offers a great breakdown of optimal [RTTY contest messages](#). Some of this great information has been condensed in the following set of rules³ and the tables below. On his fabulous website, Don also offers a number of [contest-specific examples](#).

1. Start all primary messages with a carriage return (CR/LF).
2. End *all* messages with a single space character.
3. Do not use outdated characters or character strings such as ~~DE~~, ~~K~~, ~~BK~~, ~~SK~~ or ~~UR~~ in any of your messages.
4. Send RST always as 599 and send it *only once* if required. If not required, do not send RST at all.
5. Always employ space delimiters (instead of 599-001-001 hyphens).¹
6. Always end your CQ message with CQ.
7. Always end your run confirmation message with either CQ or QRZ.

If you are completely new to RTTY, you will certainly find the [RTTY DXing presentation¹](#) of Ed Muns, WØYK/P49X, very helpful in getting you started.

As indicated by the [RTTY messaging documentation](#), RTTY messages are defined under the Options → RTTY → Modify standard messages... menu.

During a contest, you can work stations in two ways:

- either *running*: i.e. calling CQ TEST,
- or *search & pounce*: i.e. working stations that are calling CQ.

Contest mode switching is done by means of the Ctrl + TAB key combination. The currently selected mode is shown in the [clock window](#).

Table 6: Switching between running and search & pounce

key combination	action
Ctrl + TAB	Switch the primary radio between RUN and S&P mode.
SHIFT + Ctrl + TAB	Switch the secondary radio between RUN and S&P mode.

Table 7: Win-Test run macros for a contest with serial exchange

run messages	key
F1	\$13 \$RSTEXCHSENT CQ TEST \$MYCALL \$MYCALL CQ\
F2	\$13 \$SETEXCHSENT \$LOGGEDCALL \$RST \$SERIAL \$SERIAL \$LOGGEDCALL\
F3	\$CR \$13 \$LOGGEDCALL TU \$MYCALL CQ\
F4	\$13 AGN? AGN?\
F5	\$13 \$SERIAL \$SERIAL \$SERIAL \$SERIAL\

Table 8: Win-Test S&P macros for a contest with serial exchange

key	search & pounce messages
F1	\$13 \$MYCALL \$MYCALL \$MYCALL\
F2	\$13 \$SETEXCHSENT \$RST \$SERIAL \$SERIAL \$MYCALL\
F3	\$13 QSL \$MYCALL\
F4	\$13 AGN? AGN?\
F5	\$13 \$SERIAL \$SERIAL \$SERIAL \$SERIAL\

**Table 9: Win-Test run macros for a contest
with zone exchange**

key	run messages
F1	\$13 \$RSTEXCHSENT CQ TEST \$MYCALL \$MYCALL CQ\
F2	\$13 \$SETEXCHSENT \$LOGGEDCALL \$RST \$ZONE \$ZONE2 \$LOGGEDCALL\ \$CR \$13 \$LOGGEDCALL TU \$MYCALL CQ\
F3	\$13 AGN? AGN?\
F4	\$13 \$ZONE \$ZONE2 \$ZONE \$ZONE2\ \$13 \$ZONE \$ZONE2 \$ZONE \$ZONE2\
F5	

**Table 10: Win-Test S&P macros for a contest
with zone exchange**

key	search & pounce messages
F1	\$13 \$MYCALL \$MYCALL \$MYCALL\ \$13 \$SETEXCHSENT \$RST \$ZONE \$ZONE2 \$MYCALL\ \$13 QSL \$MYCALL\ \$13 AGN? AGN?\
F2	
F3	
F4	
F5	\$13 \$ZONE \$ZONE2 \$ZONE \$ZONE2\ \$13 \$ZONE \$ZONE2 \$ZONE \$ZONE2\

The \$13 macro code sends a carriage return character to the other station. Are you missing some exchange variable? Here is a [list of all available Win-Test message variables](#)

In the wee hours of the contest, even hitting the **F1** key will get draining. This is where Tools → Automatic CQ repeat... comes handy. Hit **ESC** to interrupt it at any time.

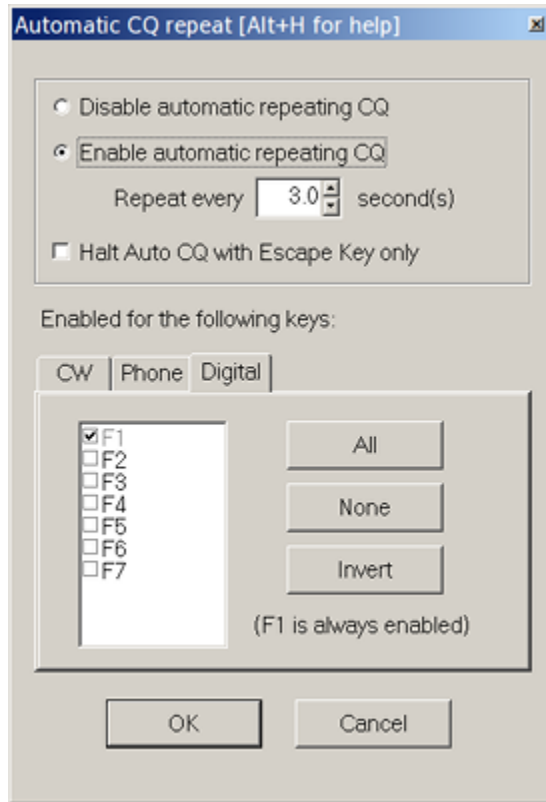


Figure 23: Automatic CQ repeat settings

QSO entry

Caveat: Select the Win-Test window to communicate!

MMTTY lives in a window which is actually separate from Win-Test's window. By consequence, **after tinkering with MMTTY, be sure to reselect Win-Test's window!** Failure to do so, will result in you hitting buttons without anything happening. You are warned.

**Table 11: Win-Test
callsign colours**

callsign colours
NEW CALLSIGNS
DUPES
NEW MULTIPLIERS
NEW DOUBLE MULTIPLIERS

Table 12: Win-Test QSO entry keys

key combination	action
<input type="button" value="ESC"/>	Abort the current transmission.
<input type="button" value="CLICK"/> on call	Enter the RTTY call.
<input type="button" value="CLICK"/> on exchange	Enter the RTTY exchange.
<input type="button" value="RETURN"/>	Log the QSO with bandmap entry.
numeric <input type="button" value="ENTER"/>	Log the QSO without bandmap entry .
<input type="button" value="SPACE"/>	Move to next essential QSO field.
<input type="button" value="TAB"/>	Move to the adjacent QSO field.
<input type="button" value="Alt"/> + <input type="button" value="F"/>	Edit date, time, frequency or operator of QSO.
<input type="button" value="Alt"/> + <input type="button" value="W"/>	Wipe the current QSO record completely.
<input type="button" value="Ctrl"/> + <input type="button" value="W"/>	Wipe the current call, keeping the exchange .
<input type="button" value="↑"/> / <input type="button" value="↓"/>	Edit a QSO or reuse a QSO record for messaging.
<input type="button" value="Ctrl"/> + <input type="button" value="TAB"/>	Switch the primary radio between RUN and S&P mode .

- [RTTY window documentation](#)
- [QSO entry documentation](#)

Band maps

Right click Properties... on the band map to configure the band map **spot lifetime**. The maximum value is 120 minutes. In this very same configuration window, also **change the spot bandwidth to 400 Hz for RTTY**. For more information, refer to the [band map documentation](#).

Table 13: Band map keys

key combination	action
<input type="button" value="RETURN"/>	Log the QSO with bandmap entry.
numeric <input type="button" value="ENTER"/>	Log the QSO without bandmap entry .
<input type="button" value="Ctrl"/> + <input type="button" value="RETURN"/>	Place the current call on the band map without logging .
<input type="button" value="DOUBLE CLICK"/>	Use the spot.
<input type="button" value="Ctrl"/> + <input type="button" value="DOUBLE CLICK"/>	Delete the spot.
<input type="button" value="MOUSE WHEEL"/>	Zoom the band map.

More Win-Test information

- At any time, one can modify the contest configuration by reopening the log file.
- Log files are available under `/home/user/win-test`
- <http://docs.win-test.com/wiki/Menu:Tools>
- <http://docs.win-test.com/wiki/Interfaces>
- <http://docs.win-test.com/wiki/RTTY>
- <http://www.country-files.com/>
- <http://www.supercheckpartial.com/>

2Tone

According to [Marc, DO4DXA](#), the RTTY-only decoder [2Tone](#) can be used with Win-Test. This new decoder by [G3YYD](#) may offer improved decoding. However, MMTTY is still required for transmitting RTTY as 2Tone does not transmit. [Marc's trick](#) involves renaming `2tone.exe` to `mmtty.exe`. I have not tried this yet, but when I do, I will report here.

Cabrillo & ADIF

At the end of the contest, create Cabrillo and ADIF log files for log submission, respectively importing to the [CQRLOG DX logging program](#). These files will be available in the `~/win-test/` directory, after going through `File → Create log file...`

Conclusion

There you have it. Provided you take care of using the right software, RTTY contesting at a competitive level sure is possible with GNU/Linux! Once you have set this up in, for example, [Xubuntu LTS](#), you will experience surprisingly less maintenance issues than with whatever Windows™ version.

TODO

- Installing a Windows™ program under PlayOnLinux
- band maps: segments
- country files
- super check partial

- Reference for “Truly keyed FSK on transmit is preferred over transmitting audio AFSK.”
- spot click mode

References

1. Ed Muns, WØYK/P49X. RTTY DXing. Published online 2012.
<https://www.ncdxc.org/presentations/2012/W0YK-RTTY-DXing-06212012.pdf>
2. Jan Ditzian, KX2A. MMTTY help. Published 2003. https://hamwaves.com/linux.rtty/doc/MMTTY_Help.v166G.pdf
3. Donald A. Hill, AA5AU. RTTY contest messages.
<https://www.rttycontesting.com/lagniappe/rtty-messages/>



This work is licensed under a [Creative Commons Attribution-NonCommercial-ShareAlike 4.0 International License](https://creativecommons.org/licenses/by-nc-sa/4.0/).

Other licensing available on request.

Unattended CSS typesetting with . The Prince logo features the word "Prince" in a stylized purple font with "Print with CSS" written in smaller text above it.

This work is published at <https://hamwaves.com/win-test/en/>.

Last update: Monday, March 1, 2021.